



Mill Bay Lane, Horsham RH12 1ST



LOCATION A ground floor, one bedroom apartment designed by award winning architect Takero Shimazaki. Their vision has transformed this iconic Victorian landmark mill into 59 inspirational apartments in a riverside setting just moments from the town centre. With residents parking and specifications that exceed expectations, this is your opportunity to own a dynamic new home in an outstanding location. Prewetts Mill is a contemporary conversion of a historic landmark part-dating from 1861, nestled into green space by the River Arun but easily accessible from the B2237 and within five minute's walk of Horsham town centre. Communal spaces are finished to an exceptional standard, and residents enjoy private allocated parking, two lifts and a spacious lobby with concierge. Horsham train station is 15 minutes' walk with direct links into London Victoria.

THE PROPERTY The front door of this spacious one bedroom ground floor apartment opens into a convenient hall way with a large storage cupboard and allowing access to all rooms. The large open plan living space offers so much flexibility for furniture measuring at 18'7" x 15'6" with four windows flooding the room with natural light. The kitchen is along one wall and has a very stylish finish boasting a range of built in appliances. The sizeable bedroom offers enough space for a large free standing wardrobe and continues this apartment's theme of natural light with double aspect views. Finally we have the very modern bathroom giving you a white suite and shower over the bath and the added bonus again of a window.

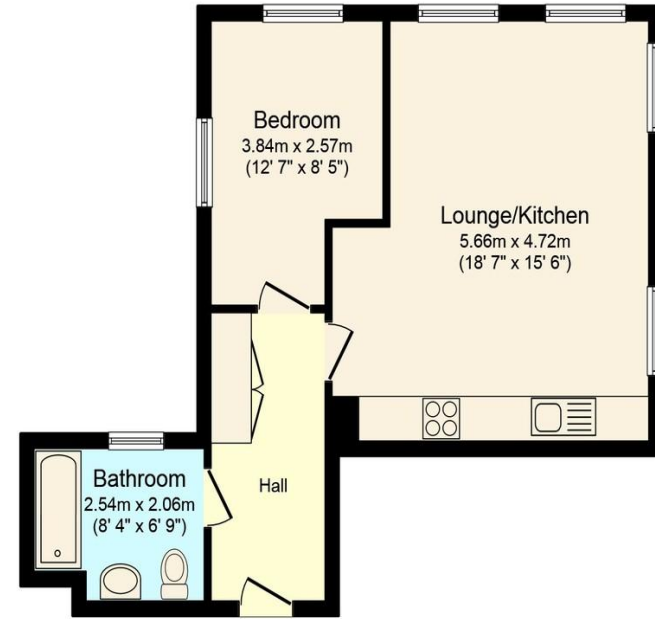
OUTSIDE The apartment is situated in the old mill section of Prewetts Mill and has one allocated parking space to the rear accessed off Mill Bay Lane. The building has a front and rear access with intercom entry systems.



Total Approximate Floor Area
46.0sqm/495sqft

Viewing arrangements by appointment through :

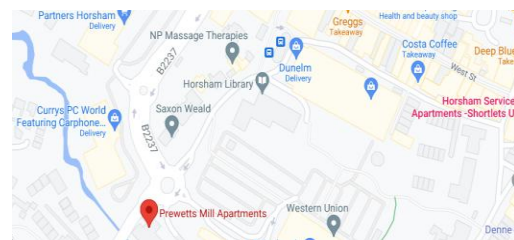
Brock Taylor
01403 272002
horshamlettings@brocktaylor.co.uk



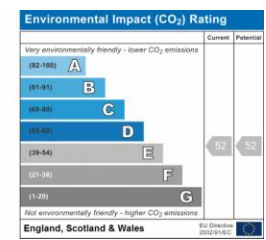
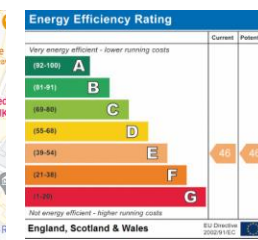
Floor Plan

Total floor area 46.0 sq. m. (495 sq. ft.) approx
Floor area 46.0 sq. m. (495 sq. ft.) approx
This floor plan is for illustration purposes only and may not be representative of the property. The position and size of doors, windows and other features are approximate. Unauthorized reproduction prohibited. © PropertyBOX

Map Location



EPC Rating



Brook Taylor Disclaimer: we would like to inform prospective purchasers that these sales particulars have been prepared as a general guide only. A detailed survey has not been carried out, nor the services, appliances and fittings tested. Room sizes should not be relied upon for furnishing purposes and are approximate. If floor plans are included they are for guidance only and illustration purposes only and may not be to scale. If there are any important matters likely to affect your decision to buy, please contact us before viewing this property.

**Residential sales, lettings,
land and new homes.**

01403 272002
brocktaylor.co.uk

2-4 East Street, Horsham, West Sussex, RH12 1HL